

MANUAL OPERATED TEMPORARY FASTENERS

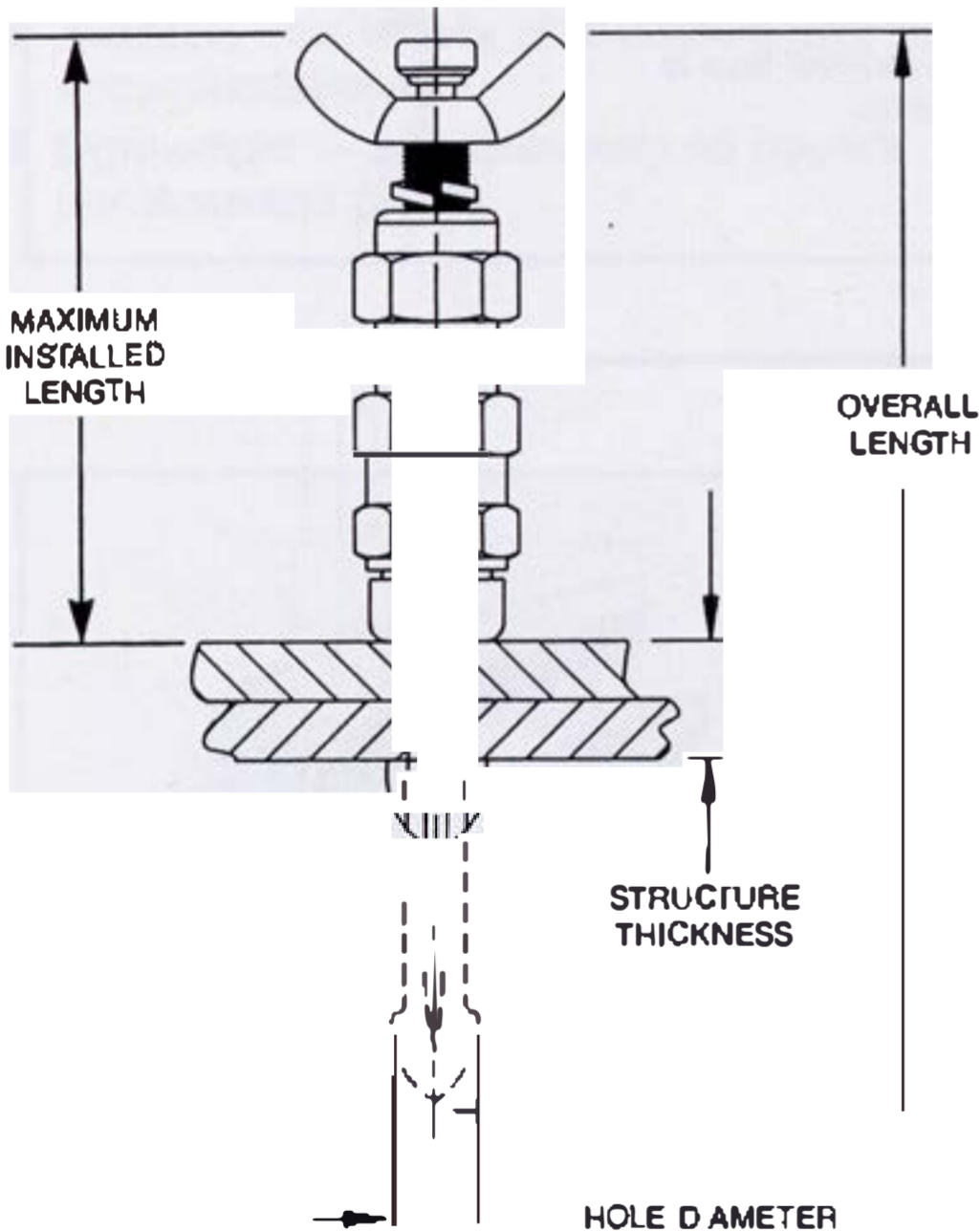
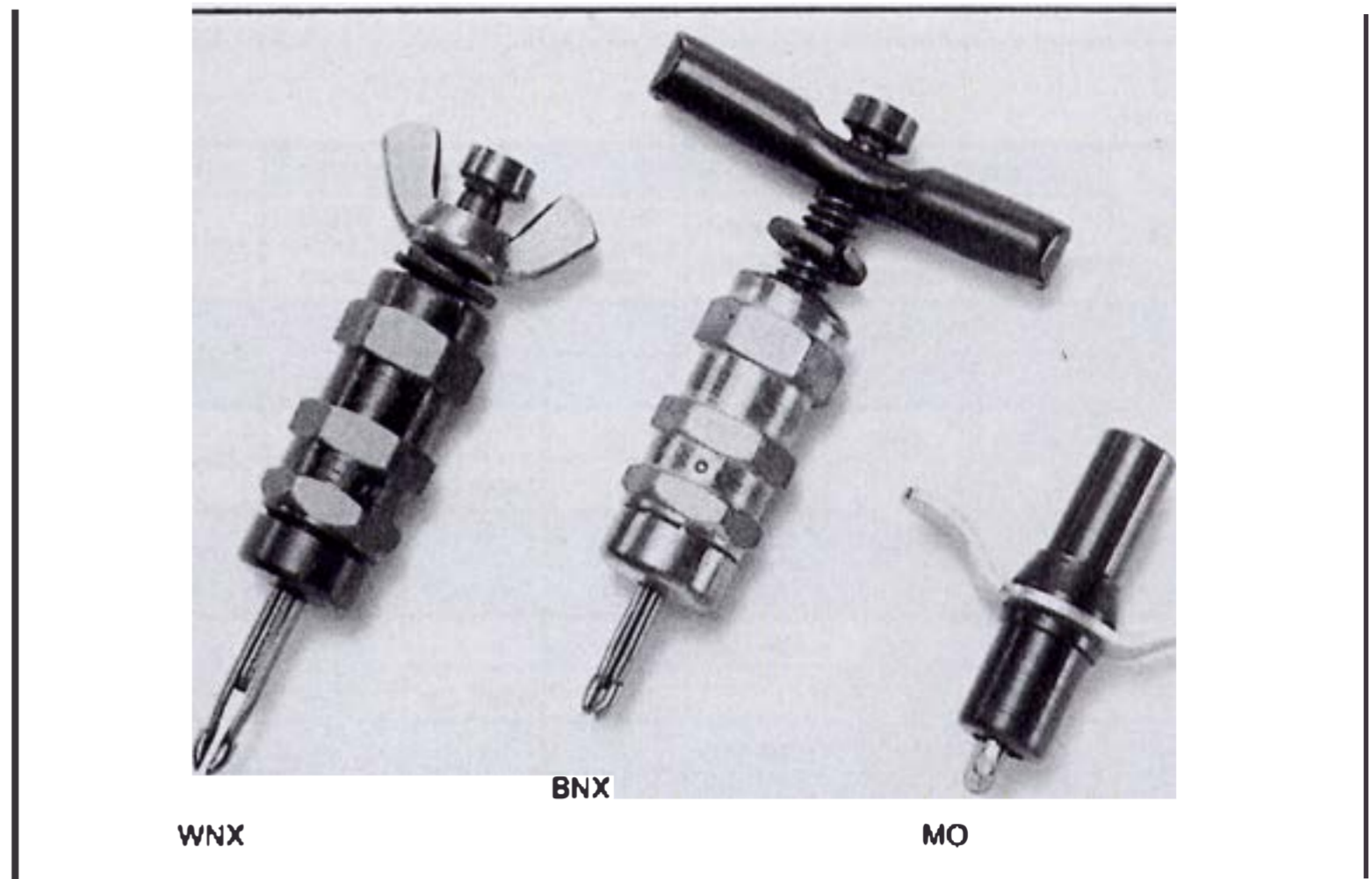
WNX, BNX and MO Series

WNX, BNX: Hand operated fasteners for structures requiring limited fastening or limited access. Clamping forces are operator controlled and can range from 50 pounds to 300 pounds.

MO: Hand operated fasteners for minimal clamping loads (max.: 12 lbs.) and limited access applications.

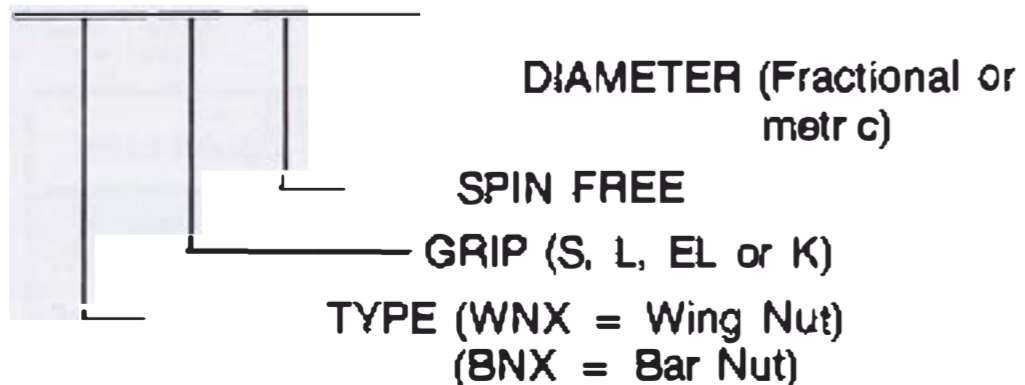
FEATURES

- Easy to operate
- Re-usable
- Controlled clamping forces
- Color-coded by size for easy identification
- Material compatibility with use of plastic caps (see page 6)
- Wide range of diameters and grip lengths



PART NUMBER EXAMPLE:

WNXEL-SF-1/8



FRACTIONAL SIZES — WNX & BNX

HOLE DIA. (inches)	GRIP RANGE (inches)	WING NUT	BAR NUT	BODY LENGTH		BODY COLOR	DRILL SIZE
		PART NO	PART NO.	INSTALLED (inches)	OVERALL (inches)		
3/32	0—5/16	WNXS-SF-3/32	BNXS-SF-3/32	2-7/32	2 3/8	Zinc	#40
	0—1/2	WNX-SF-3/32	BNX SF 3/32	2 11/16	2-7/8		
	0—1	WNXL-SF-3/32	BNXL-SF-3/32	3-11/16	3-7/8		
	1/2—1-1/2	WNXEL-SF-3/32	BNXEL-SF-3/32	3-47/64	4-3/8		
1/8	0—5/16	WNXS-SF-1/8	BNXS SF 1/8	2 7/32	2-3/8	Copper	#30
	0—1/2	WNX-SF-1/8	BNX SF 1/8	2 11/16	2 7/8		
	0—1	WNXL-SF-1/8	BNXL-SF-1/8	3-11/16	3-7/8		
	1/2—1-1/2	WNXEL-SF-1/8	BNXEL-SF-1/8	3-47/64	4-3/8		
	1-1/2—2-1/2	WNXK-SF-1/8	BNXK SF 1/8	3-47/64	5-3/8		
5/32	0—5/16	WNXS-SF-5/32	BNXS-SF-5/32	2-7/32	2 3/8	Black	#20
	0—1/2	WNX SF 5/32	BNX-SF 5/32	2-11/16	2-7/8		
	0—1	WNXL-SF-5/32	BNXL-SF-5/32	3-11/16	3-7/8		
	1/2—1-1/2	WNXEL-SF-5/32	BNXEL-SF-5/32	3-47/64	4-3/8		
	1-1/2—2-1/2	WNXK SF 5/32	BNXK SF-5/32	3-47/64	5-3/8		
3/16	0—5/16	WNXS-SF-3/16	BNXS SF3/16	2 7/32	2-3/8	Brass	#10
	0—1/2	WNX-SF-3/16	BNX-SF-3/16	2 11/16	2 7/8		
	0—1	WNXL-SF3/16	BNXL-SF-3/16	3-11/16	3-7/8		
	1/2—1-1/2	WNXEL-SF-3/16	BNXEL SF 3/16	3-47/64	4-3/8		
	1-1/2—2-1/2	WNXK SF 3/16	BNXK-SF-3/16	3-47/64	5 3/8		
7/32	0—5/16	WNXS-SF-7/32	BNXS SF7/32	2-7/32	2-3/8	Zinc	#2
	0—1/2	WNX-SF 7/32	BNX-SF-7/32	2-11/16	2 7/8		
	0—1	WNXL-SF 7/32	BNXL-SF 7/32	3-11/16	3-7/8		
	1/2—1-1/2	WNXEL-SF-7/32	BNXEL-SF 7/32	3-47/64	4-3/8		
1/4	0—5/16	WNXS-SF-1/4	BNXS-SF-1/4	2 7/32	2 3/8	Copper	1/4"
	0—1/2	WNX-SF-1/4	BNX SF 1/4	2-11/16	2-7/8		
	0—1	WNXL-SF-1/4	BNXL-SF 1/4	3-11/16	3-7/8		
	1/2—1-1/2	WNXEL-SF 1/4	BNXEL-SF-1/4	3-47/64	4-3/8		
	1-1/2—2-1/2	WNXK-SF-1/4	BNXK-SF 1/4	3-47/64	5 3/8		
5/16	0—1/2	WNX SF 5/16	BNX-SF-5/16	2-11/16	2 7/8	Black	5/16"
	0—1	WNXL-SF-5/16	BNXL SF 5/16	3-11/16	3-7/8		
	1/2—1-1/2	WNXEL-SF-5/16	BNXEL-SF-5/16	3-47/64	4 3/8		
	1-1/2—2-1/2	WNXK-SF 5/16	BNXK SF-5/16	3-47/64	5-3/8		
3/8	0—1/2	WNX-SF-3/8	BNX-SF 3/8	2 11/16	2-7/8	Black With Brass Cap	3/8"
	0—1	WNXL-SF 3/8	BNXL-SF-3/8	3-11/16	3-7/8		
	1/2—1-1/2	WNXEL-SF-3/8	BNXEL SF 3/8	3-47/64	4-3/8		
	1-1/2—2-1/2	WNXK SF 3/8	BNXK-SF-3/8	3-47/64	5-7/8		