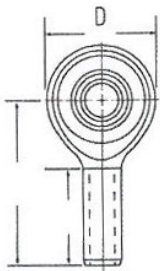
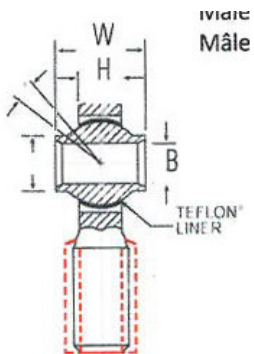


Femmina
Female
Femelle



Maschio
Male
Mâle



Maschio
Mâle

| Codice | Tipo filetto | Ø foro (B) | Verso | Filetto | Ø testa (D) | Altezza anello (H) | Altezza Sfera (W) |
|------------|--------------|------------|----------|----------------|-------------|--------------------|-------------------|
| ARYT03CR | Femmina | 4,826 mm | Destro | UNF 5/16 x 24 | 19,05 mm | 5,59 mm | 12,70 mm |
| ARYTL03CR | Femmina | 4,826 mm | Sinistro | UNF 5/16 x 24 | 19,05 mm | 5,59 mm | 12,70 mm |
| ARYT04CR | Femmina | 6,350 mm | Destro | UNF 3/8 x 24 | 25,40 mm | 6,73 mm | 15,06 mm |
| ARYTL04CR | Femmina | 6,350 mm | Sinistro | UNF 3/8 x 24 | 25,40 mm | 6,73 mm | 15,06 mm |
| ARYT05CR | Femmina | 7,938 mm | Destro | UNF 7/16 x 20 | 28,58 mm | 9,02 mm | 20,65 mm |
| ARYTL05CR | Femmina | 7,938 mm | Sinistro | UNF 7/16 x 20 | 28,58 mm | 9,02 mm | 20,65 mm |
| ARYT06CR | Femmina | 9,525 mm | Destro | UNF 7/16 x 20 | 28,58 mm | 9,02 mm | 20,65 mm |
| ARYTL06CR | Femmina | 9,525 mm | Sinistro | UNF 7/16 x 20 | 28,58 mm | 9,02 mm | 20,65 mm |
| ARYT07CR | Femmina | 11,112 mm | Destro | UNF 1/2 x 20 | 33,32 mm | 9,02 mm | 22,22 mm |
| ARYTL07CR | Femmina | 11,112 mm | Sinistro | UNF 1/2 x 20 | 33,32 mm | 9,02 mm | 22,22 mm |
| ARYT08CR | Femmina | 12,700 mm | Destro | UNF 5/8 x 18 | 38,10 mm | 10,44 mm | 23,80 mm |
| ARYTL08CR | Femmina | 12,700 mm | Sinistro | UNF 5/8 x 18 | 38,10 mm | 10,44 mm | 23,80 mm |
| ARYT10CR | Femmina | 15,875 mm | Destro | UNF 3/4 x 16 | 44,45 mm | 14,66 mm | 30,48 mm |
| ARYTL10CR | Femmina | 15,875 mm | Sinistro | UNF 3/4 x 16 | 44,45 mm | 14,66 mm | 30,48 mm |
| ARYT12CR | Femmina | 19,050 mm | Destro | UNF 7/8 x 14 | 50,80 mm | 16,00 mm | 32,51 mm |
| ARYTL12CR | Femmina | 19,050 mm | Sinistro | UNF 7/8 x 14 | 50,80 mm | 16,00 mm | 32,51 mm |
| ARYT14CR | Femmina | 22,225 mm | Destro | UNF 7/8 x 14 | 55,88 mm | 16,13 mm | 35,56 mm |
| ARYTL14CR | Femmina | 22,225 mm | Sinistro | UNF 7/8 x 14 | 55,88 mm | 16,13 mm | 35,56 mm |
| ARYT16CR | Femmina | 25,400 mm | Destro | UNF 1 1/4 x 12 | 69,85 mm | 21,46 mm | 47,62 mm |
| ARYTL16CR | Femmina | 25,400 mm | Sinistro | UNF 1 1/4 x 12 | 69,85 mm | 21,46 mm | 47,62 mm |
| ARYT20CR | Femmina | 31,750 mm | Destro | UNF 1 1/4 x 12 | 79,38 mm | 25,78 mm | 47,62 mm |
| ARYTL20CR | Femmina | 31,750 mm | Sinistro | UNF 1 1/4 x 12 | 79,38 mm | 25,78 mm | 47,62 mm |
| ARYT03ECR | Maschio | 4,826 mm | Destro | UNF 5/16 x 24 | 19,05 mm | 5,59 mm | 12,70 mm |
| ARYTL03ECR | Maschio | 4,826 mm | Sinistro | UNF 5/16 x 24 | 19,05 mm | 5,59 mm | 12,70 mm |
| ARYT04ECR | Maschio | 6,350 mm | Destro | UNF 3/8 x 24 | 25,40 mm | 6,73 mm | 15,06 mm |
| ARYTL04ECR | Maschio | 6,350 mm | Sinistro | UNF 3/8 x 24 | 25,40 mm | 6,73 mm | 15,06 mm |
| ARYT05ECR | Maschio | 7,938 mm | Destro | UNF 7/16 x 20 | 28,58 mm | 9,02 mm | 20,65 mm |
| ARYTL05ECR | Maschio | 7,938 mm | Sinistro | UNF 7/16 x 20 | 28,58 mm | 9,02 mm | 20,65 mm |
| ARYT06ECR | Maschio | 9,525 mm | Destro | UNF 7/16 x 20 | 28,58 mm | 9,02 mm | 20,65 mm |
| ARYTL06ECR | Maschio | 9,525 mm | Sinistro | UNF 7/16 x 20 | 28,58 mm | 9,02 mm | 20,65 mm |
| ARYT07ECR | Maschio | 11,112 mm | Destro | UNF 1/2 x 20 | 33,32 mm | 9,02 mm | 22,22 mm |
| ARYTL07ECR | Maschio | 11,112 mm | Sinistro | UNF 1/2 x 20 | 33,32 mm | 9,02 mm | 22,22 mm |
| ARYT08ECR | Maschio | 12,700 mm | Destro | UNF 5/8 x 18 | 38,10 mm | 10,44 mm | 23,80 mm |
| ARYTL08ECR | Maschio | 12,700 mm | Sinistro | UNF 5/8 x 18 | 38,10 mm | 10,44 mm | 23,80 mm |
| ARYT10ECR | Maschio | 15,875 mm | Destro | UNF 3/4 x 16 | 44,45 mm | 14,66 mm | 30,48 mm |
| ARYTL10ECR | Maschio | 15,875 mm | Sinistro | UNF 3/4 x 16 | 44,45 mm | 14,66 mm | 30,48 mm |
| ARYT12ECR | Maschio | 19,050 mm | Destro | UNF 7/8 x 14 | 50,80 mm | 16,00 mm | 32,51 mm |
| ARYTL12ECR | Maschio | 19,050 mm | Sinistro | UNF 7/8 x 14 | 50,80 mm | 16,00 mm | 32,51 mm |
| ARYT14ECR | Maschio | 22,225 mm | Destro | UNF 7/8 x 14 | 55,88 mm | 16,13 mm | 35,56 mm |
| ARYTL14ECR | Maschio | 22,225 mm | Sinistro | UNF 7/8 x 14 | 55,88 mm | 16,13 mm | 35,56 mm |
| ARYT16ECR | Maschio | 25,400 mm | Destro | UNF 1 1/4 x 12 | 69,85 mm | 21,46 mm | 47,62 mm |
| ARYTL16ECR | Maschio | 25,400 mm | Sinistro | UNF 1 1/4 x 12 | 69,85 mm | 21,46 mm | 47,62 mm |
| ARYT20ECR | Maschio | 31,750 mm | Destro | UNF 1 1/4 x 12 | 79,38 mm | 25,78 mm | 47,62 mm |
| ARYTL20ECR | Maschio | 31,750 mm | Sinistro | UNF 1 1/4 x 12 | 79,38 mm | 25,78 mm | 47,62 mm |