



PAOLI SOCKETS

The new Paoli wheel nut sockets

PAOLI SOCKETS

S

WHEEL NUT SOCKETS

The new Paoli sockets are an unprecedented product and the result of a long and complex engineering research. Continued consultation with many race customers has ensured that the Paoli Sockets' technological development goes hand in hand with the real needs of racing teams in terms of versatility, safety, materials and maintenance.

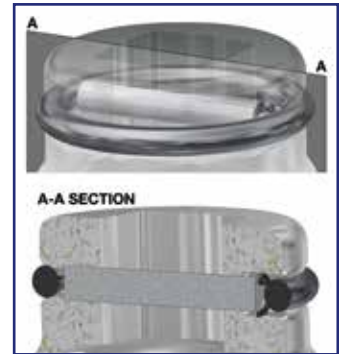
- Three different materials: titanium, special steel and aeronautical aluminium. The first and the second are suitable for the race application, the third one is suitable for non-intensive use and torque wrench.
- Innovative design, attractive shapes and aesthetically pleasing.
- Accuracy in fitting the socket to the square drive, perfect clearance that allows the socket to be assembled and disassembled just by hand.
- Innovative safety system to insert the pin through the socket/square drive hole. Revolutionary system when assembling the socket by using the circlip and an 'O' ring on the cover. Maximum safety, a fine fitting and a considerably reduced assembly time.
- Insertion of service holes for maintenance of magnets: replacing magnets is quick and easy, with a simple plug-locator.
- Internal 'O' ring retaining nut made from new Paoli Sockets material. The customized resin gives the socket an ideal grip with its high gripping power.
- The Paoli Sockets Service Kit for the maintenance and replacement of worn parts contains everything needed to work on the socket simply and safely. A brief instruction manual indicates the optimum way to carry out operations (E.g. replacement and subsequent refinement of magnets).



Internal 'O' ring retaining nut especially made for Paoli Sockets.

Also available in aeronautical aluminium, suitable for torque wrench applications.

Innovative safety system.



Replacing magnets is quick and easy thanks to rear service holes.

Accuracy in fitting the socket to the wrench (minimal clearance).

Innovative design, attractive shapes and aesthetically pleasing.

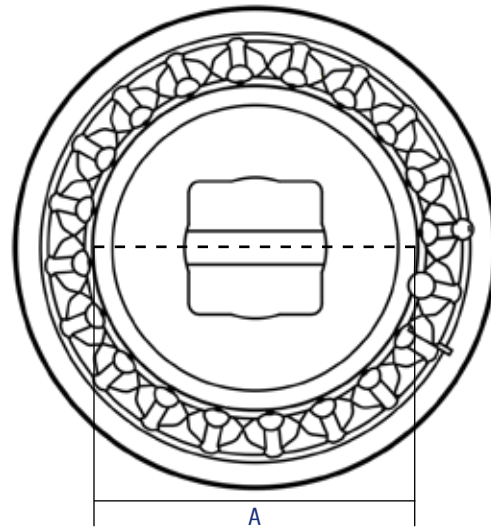


Operating and
Maintenance
MANUAL



CHOOSE YOUR PAOLI SOCKET

SOCKETS "WITH FINGERS"

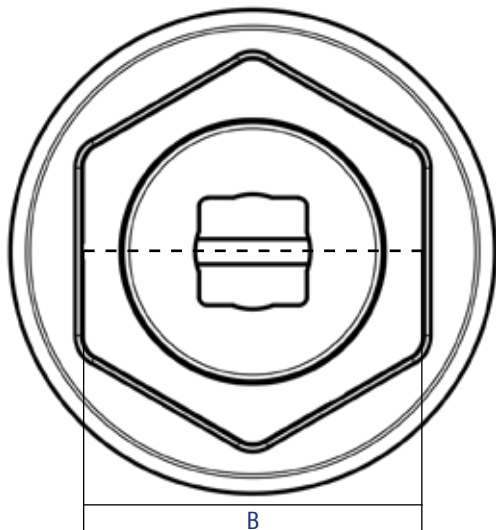


CODE	PAGE	CODE	PAGE	CODE	PAGE
B.28.0090	83	B.28.0095	87	B.28.0083	90
B.28.0082	83	B.28.0050	87	B.28.0063	90
B.28.0051	83	B.28.0080	88	B.28.0052	91
B.28.0058	83	B.28.0033	88	B.28.0059	92
B.28.0042	84	B.28.0041	88	B.28.0098	92
B.28.0081	87	B.28.0087	89		



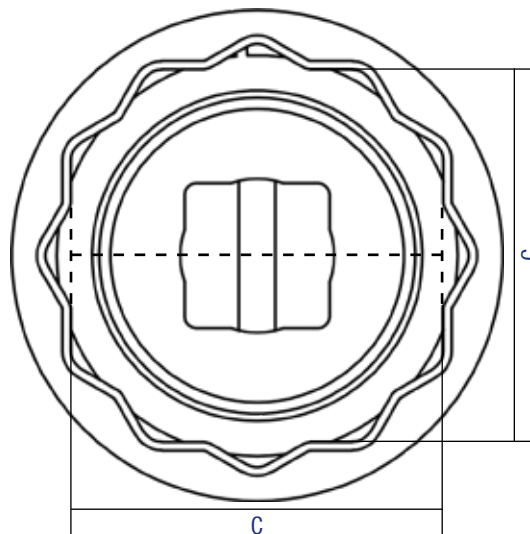
CHOOSE YOUR PAOLI SOCKET

HEXAGONAL SOCKETS



CODE	PAGE
B.28.0037	84
B.28.0064	86

DODECAGONAL SOCKETS



CODE	PAGE	CODE	PAGE
B.28.0091	85	B.28.0035	92
B.28.0061	85	B.28.0062	92
B.28.0034	92	B.28.0053	93



SOCKET CONFIGURATOR

BEST PRACTICE	CODE	DRIVE	MATERIAL	PAGE	BEST PRACTICE	CODE	DRIVE	MATERIAL	PAGE
F488	B.28.0090	Spline	Titanium	83	INDYCAR	B.28.0080	Spline	Titanium	88
	B.28.0082	Spline	Titanium	83		B.28.0033	Square 1"	Titanium	88
	B.28.0051	Square 1"	Alluminium	83		B.28.0041	Square 1"	Alluminium	88
	B.28.0058	Square 1"	Titanium	83		PORSCHE 911 RSR	B.28.0087	Spline	Titanium
F458 GT3	B.28.0042	Square 1"	Alluminium	84	PORSCHE 911 GT3-R	B.28.0083	Spline	Titanium	90
F430 CHALLENGE	B.28.0037	Square 1"	Alluminium	84		B.28.0063	Square 1"	Titanium	90
FORMULA 2	B.28.0091	Spline	Titanium	85	PORSCHE 991 CUP	B.28.0052	Square 1"	Alluminium	91
	B.28.0061	Square 1"	Titanium	85	MERCEDES AMG GT3-R	B.28.0059	Square 1"	Steel	91
HURACAN SUPER TROFEO	B.28.0064	Square 1"	Alluminium	86		B.28.0098	Square 1"	Titanium	91
HURACAN GT3	B.28.0081	Spline	Steel	87	GP3 WSR F3	B.28.0034	Square 1"	Steel	92
	B.28.0095	Square 1"	Steel	87		B.28.0035	Square 3/4"	Steel	92
	B.28.0050	Square 1"	Steel	87	SUPER FORMULA	B.28.0062	Square 1"	Steel	92
					LMP3	B.28.0053	Square 1"	Steel	93



BEST PRACTICE → FERRARI ENDURANCE

PATENT
PENDING



B.28.0090

B.28.0082

F488

CODE	B.28.0090	B.28.0082
DRIVE	Paoli Spline	Paoli Spline
MATERIAL	titanium	titanium
A	59 mm	59 mm
RETENTION SYSTEM	front fixing screw	front fixing screw
TEETH NUMBER	12	24



B.28.0051

B.28.0058

F488

CODE	B.28.0051	B.28.0058
SQUARE DRIVE	1"	1"
MATERIAL	aluminium	titanium
A	59 mm	59 mm
RETENTION SYSTEM	n.a.	n.a.
TEETH NUMBER	24	24





BEST PRACTICE → FERRARI ENDURANCE



ALUMINIUM SOCKET:
ONLY FOR TORQUE WRENCH APPLICATION

F458 GT3 (14 slots nut)

CODE	B.28.0042
SQUARE DRIVE	1"
MATERIAL	aluminium
A	69,18 mm
RETENTION SYSTEM	magnets and o-ring
TEETH NUMBER	28



BEST PRACTICE → FERRARI CHALLENGE



ALUMINIUM SOCKET:
ONLY FOR TORQUE WRENCH APPLICATION

FERRARI 430 CHALLENGE

CODE	B.28.0037
SQUARE DRIVE	1"
MATERIAL	aluminium
B	80 mm
RETENTION SYSTEM	balls and springs



BEST PRACTICE → FORMULA 2

PATENT
PENDING



FORMULA 2

CODE	B.28.0091
DRIVE	Paoli Spline
MATERIAL	titanium
C	65 mm
RETENTION SYSTEM	front fixing screw

FORMULA 2

CODE	B.28.0061
DRIVE	1"
MATERIAL	titanium
C	65 mm
RETENTION SYSTEM	harmonic ring





BEST PRACTICE → LAMBORGHINI SUPER TROFEO



ALUMINIUM SOCKET:
ONLY FOR TORQUE
WRENCH APPLICATION

HURACAN SUPER TROFEO

CODE B.28.0064

SQUARE DRIVE 1"

MATERIAL aluminium

B 70 mm

RETENTION SYSTEM magnets



BEST PRACTICE → LAMBORGHINI ENDURANCE

PATENT
PENDING



HURACAN GT3

CODE	B.28.0081
DRIVE	Paoli Spline
MATERIAL	steel
A	49,5 mm
RETENTION SYSTEM	front fixing screw
TEETH NUMBER	20



HURACAN GT3

CODE	B.28.0095	B.28.0050
SQUARE DRIVE	1"	1"
MATERIAL	steel	steel
A	49,5 mm	49,5 mm
RETENTION SYSTEM	magnets	magnets
TEETH NUMBER	10	20





BEST PRACTICE → INDYCAR

PATENT
PENDING



INDYCAR

CODE	B.28.0080
DRIVE	Paoli Spline
MATERIAL	titanium
A	65,26 mm
RETENTION SYSTEM	front fixing screw
TEETH NUMBER	20



B.28.0033

B.28.0041

ALUMINIUM SOCKET:
ONLY FOR TORQUE
WRENCH APPLICATION

INDYCAR

CODE	B.28.0033	B.28.0041
SQUARE DRIVE	1"	1"
MATERIAL	titanium	aluminium
A	65,26 mm	65,26 mm
RETENTION SYSTEM	magnets and o-ring	magnets and o-ring
TEETH NUMBER	20	20



BEST PRACTICE → PORCHE CUP. ENDURANCE



NEW PAOLI SOCKET!
ORIGINAL PAOLI DESIGN
FOR SPLINE WHEEL GUNS.
CUTTING EDGE ANVIL-SOCKET
PAOLI FIXING SYSTEM! (Page 15)



PORSCHE 911 RSR

CODE	B.28.0087
DRIVE	Paoli Spline
MATERIAL	titanium
A	50,8 mm
RETENTION SYSTEM	magnets
TEETH NUMBER	18





BEST PRACTICE → PORSCHE CUP, ENDURANCE

**PATENT
PENDING**



RADIAL GRUB:
REDUCES THE GAP
BETWEEN SOCKET
AND SQUARE DRIVE



PORSCHE 911 GT3-R

CODE	B.28.0083
DRIVE	Paoli Spline
MATERIAL	titanium
A	58,5 mm
RETENTION SYSTEM	front fixing screw
TEETH NUMBER	18

PORSCHE 911 GT3-R

CODE	B.28.0063
SQUARE DRIVE	1"
MATERIAL	titanium
A	58,5 mm
RETENTION SYSTEM	magnets
TEETH NUMBER	18

BEST PRACTICE → PORSCHE CUP, ENDURANCE

BEST PRACTICE → MERCEDES SL3



ALUMINIUM SOCKET:
ONLY FOR TORQUE
WRENCH APPLICATION



B.28.0059

B.28.0098

PORSCHE 991 CUP

CODE	B.28.0052
SQUARE DRIVE	1"
MATERIAL	aluminium
A	65 mm
RETENTION SYSTEM	o-ring
TEETH NUMBER	15

Available on demand

MERCEDES AMG GT3R

CODE	B.28.0059	B.28.0098
SQUARE DRIVE	1"	1"
MATERIAL	steel	titanium
A	61 mm	61 mm
RETENTION SYSTEM	pin, circlip and o-ring	pin, circlip and o-ring
TEETH NUMBER	12	12



BEST PRACTICE → GP3 WSR F3



B.28.0035

B.28.0034

GP3 WSR F3

CODE	B.28.0034	B.28.0035
SQUARE DRIVE	1"	3/4"
MATERIAL	steel	steel
C	55 mm	55 mm
RETENTION SYSTEM	balls and springs	balls and springs



BEST PRACTICE → SUPER FORMULA



SUPER FORMULA

CODE	B.28.0062
SQUARE DRIVE	1"
MATERIAL	steel
C	65 mm
RETENTION SYSTEM	harmonic ring



BEST PRACTICE → LMP3



LMP3

CODE	B.28.0053
SQUARE DRIVE	1"
MATERIAL	steel
C	60 mm
RETENTION SYSTEM	magnets



PAOLI WHEEL NUTS



COMPATIBLE WITH F488

CODE	VERSION	DESCRIPTION
B.32.0018	LH - aerospace steel	with slots
B.32.0019	RH - aerospace steel	with slots

On demand we are able to produce and supply more wheel nuts for different specific needs.

